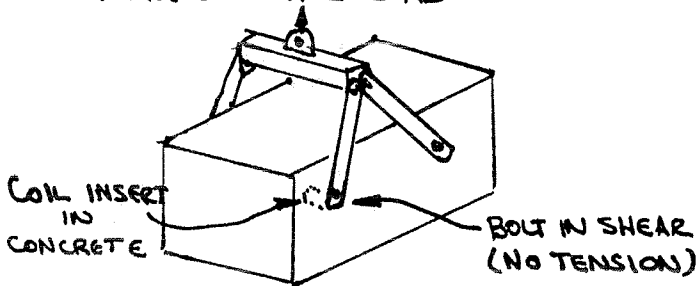


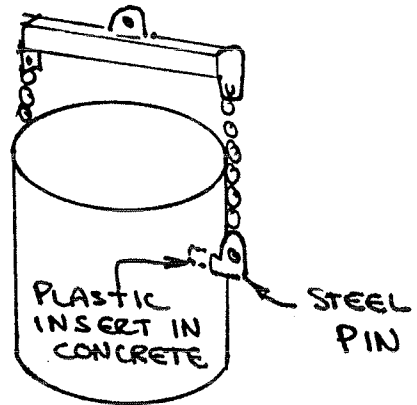
GARY K. MUNKELT, PE

## II. Bolted/Twist Lock Connection

DESIGN FOR 4 BOLTS  
LIFTING TOTAL LOAD



DESIGN FOR 2 PINS  
LIFTING  
TOTAL  
LOAD



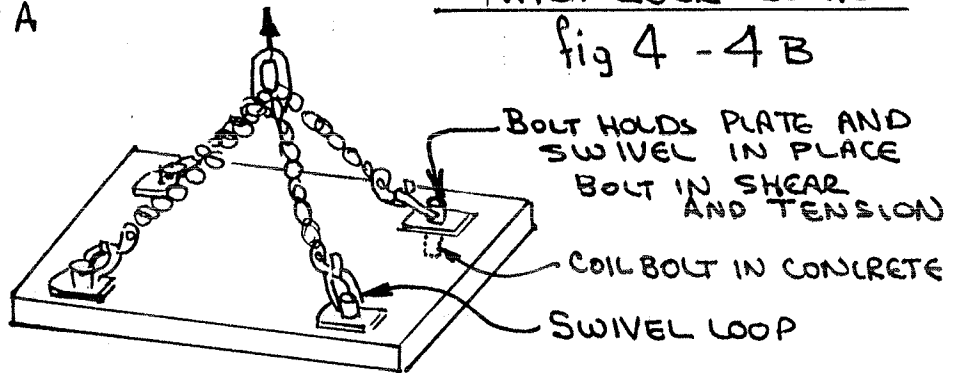
BOLT IN SHEAR CONN.

fig. 4-4 A

TWIST LOCK CONN.

fig 4 - 4 B

DESIGN FOR  
2 LEGS  
LIFTING  
TOTAL LOAD



BOLT IN SHEAR AND TENSION CONN.

fig 4 - 4 C

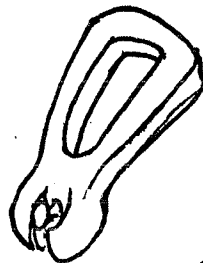
## III. Anchors

ONE PATENTED PIECE OF LIFTING EQUIPMENT IS THE "SWIFT LIFT SYSTEM" AS MANUFACTURED BY THE DAYTON SUPERIOR CORP.

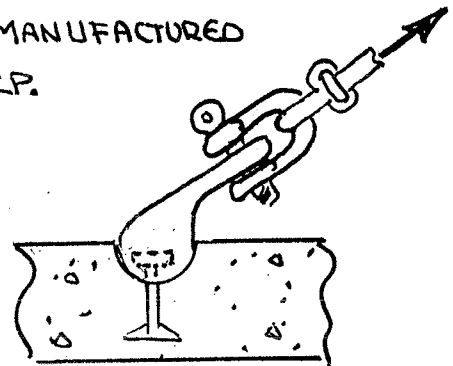
REMOVABLE RUBBER PLUG  
HIGH STRENGTH STEEL ANCHOR



DETAIL of ANCHOR  
DURING POUR



ISOMETRIC of  
LIFTING EYE



ANCHOR w. LIFTING  
EYE IN TENSION

PATENTED QUICK DISCONNECT ANCHORS

fig 4-5